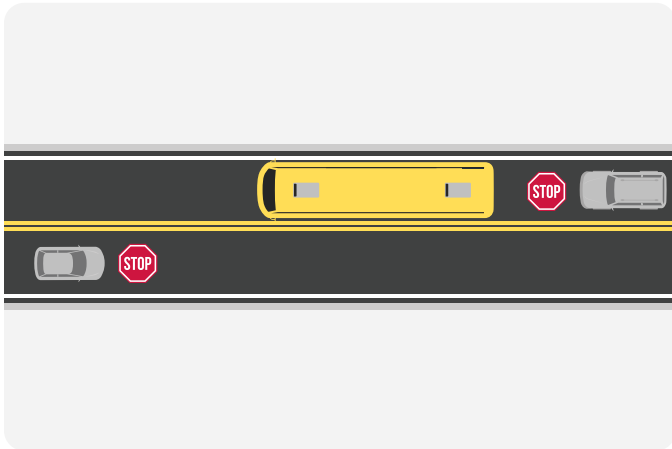


# Kentucky

## When Drivers Have to Stop For School Buses

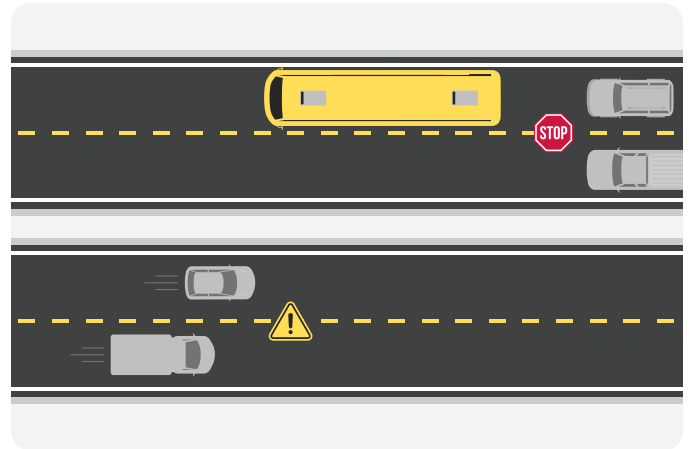
Understanding when a motorist is required to stop for school buses that are picking up or dropping off children can help keep students safe. Here's a breakdown of some common situations and the laws in Kentucky.

### Two-lane road



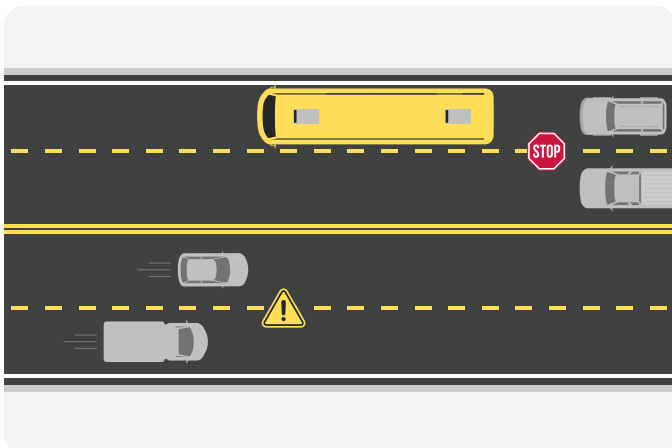
When a school bus is stopped on a two-lane roadway without a median, all cars traveling in either direction must stop.

### Four or more lanes with median



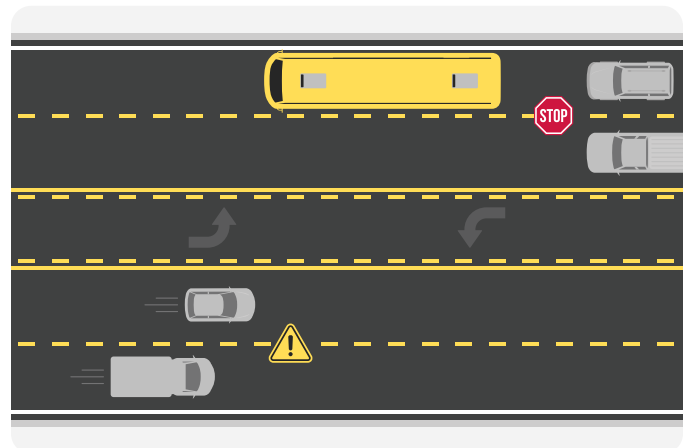
If a bus is stopped on a multi-lane road with a median—whether it's concrete, grass, or just an unpaved separation—cars traveling in the opposite direction can keep moving while all cars following the bus must stop.

### Four or more lanes without median



If the bus is on a road with four or more lanes without a median, only the cars following the bus on the same side of the road must stop.

### Four or more lanes with center turn lane



When a school bus is stopped on a road with four or more lanes and a center turn lane, only cars following the bus must stop.

SOURCE: State Driver's license manual and Education Week reporting